



SHADED POLE MOTOR Ø 52



FEATURES

Motor life: from 3.000 hours (sinterized sleeve bearings) to 30.000 hours (ball bearings)

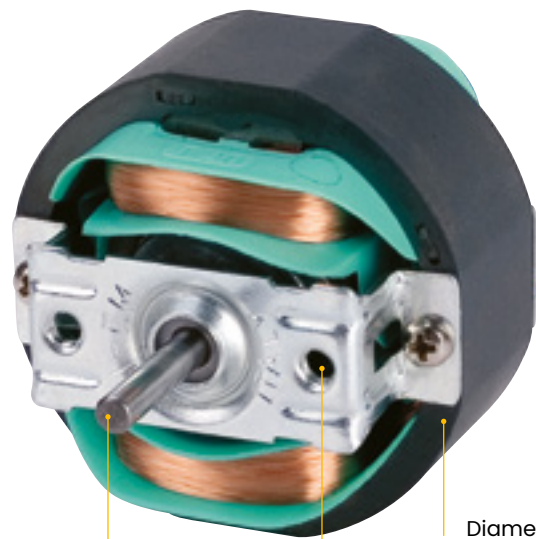
Motor compliant for attended and unattended appliances
2-speed version available

Class of insulation according to IEC 60085: F or H

Power supply: from 12 VAC to 240 VAC / 1 / 50-60 Hz

Operating temperature from 0°C to 40°C
different temperature on demand

Ideal for reduced space, they are available in a wide range of versions and they are featuring high electromagnetic efficiency. This allows Giem to meet several application requirements: ventilators, fan heaters, air cleaners, and humidifiers.



Diameter: 52 mm

Shaft diameter 4 mm;
clock-wise and counter clock-wise

Fixing holes threaded M4

OPTIONS



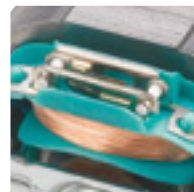
Shaft can be smooth, milled or with grooves with length on demand



Fuse



Plastic flange with ball bearing



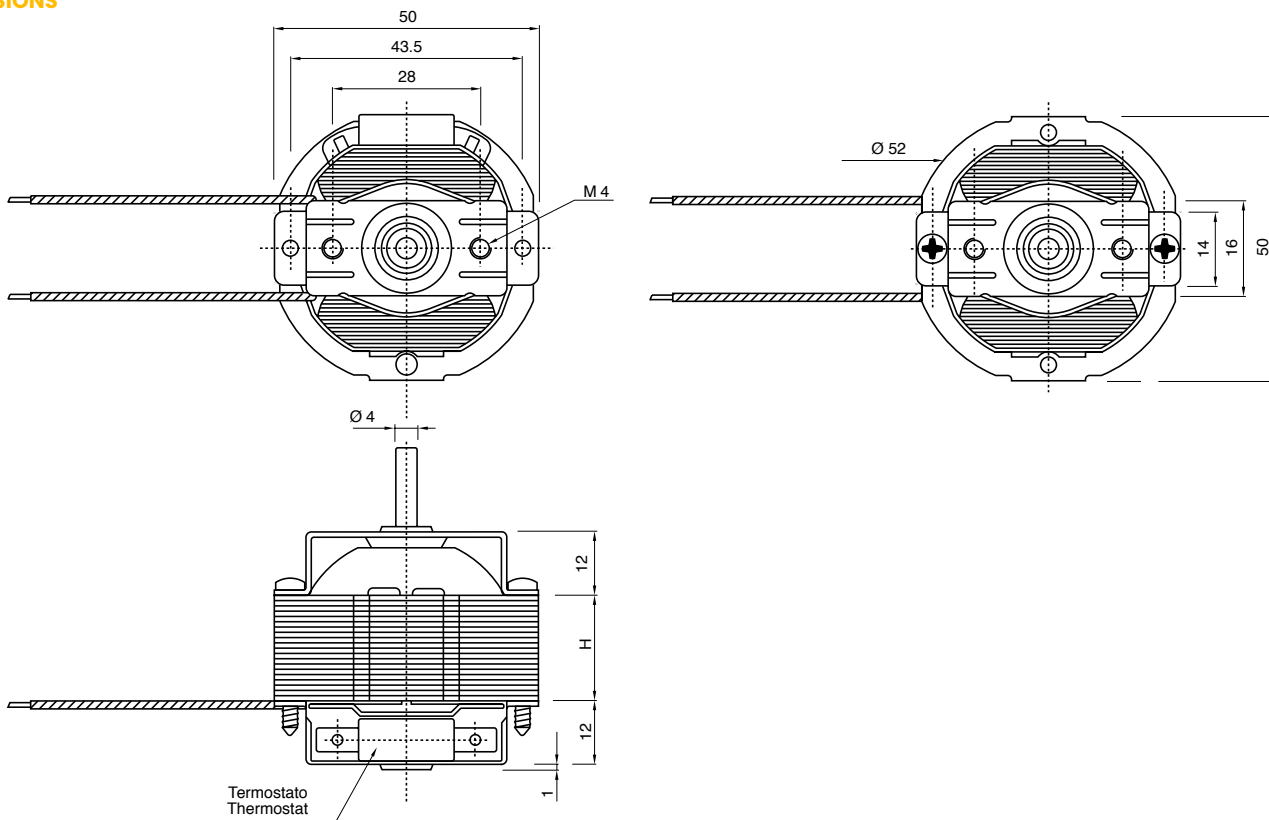
Thermostat



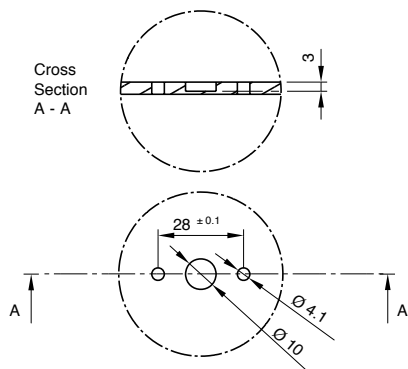
Stack height from 16 to 30 mm

Motors protected by motor impedance or thermal protected by fuse or thermostat (autoreset or self holding)

DIMENSIONS



CUT OUT



TECHNICAL FEATURES

Stack height (H) mm	Power absorption W		
	Low consumption version	Normal version	Powered version
16	8	15	25
20	10	20	25
25	15	20	30
30	20	30	40