

# INDICATOR LIGHTS



SERIES

CUT OUT

<b>FUNCTIONS</b>	<ul style="list-style-type: none"> <li>Neon or fluorescent lamp, with or without anti-luminescence resistor</li> <li>Incandescent lamp</li> <li>LED in AC or DC version</li> </ul>
<b>VOLTAGE</b>	From 2 VAC to 400 VAC
<b>MAX TEMPERATURE</b>	From 75 °C to 150 °C
<b>GWT</b>	850 °C
<b>GWT NO FLAME (&lt;2sec)</b>	650 °C



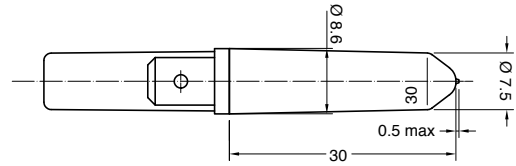
DRAWING

21



Custom

3

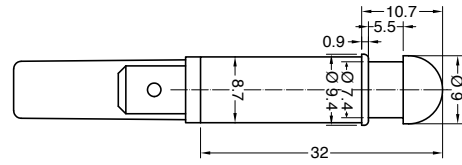
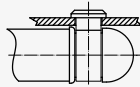


Accessory lenses available separately

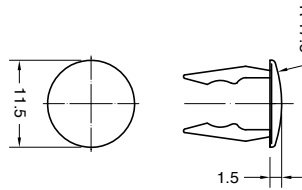
4



5.4 x 9 mm  
th 1.5 mm

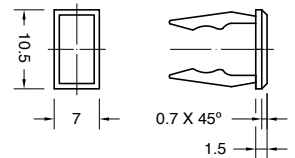


P Drawing 4 + round lens



Lens available also separately SX2IT542...

Q Drawing 4 + square lens

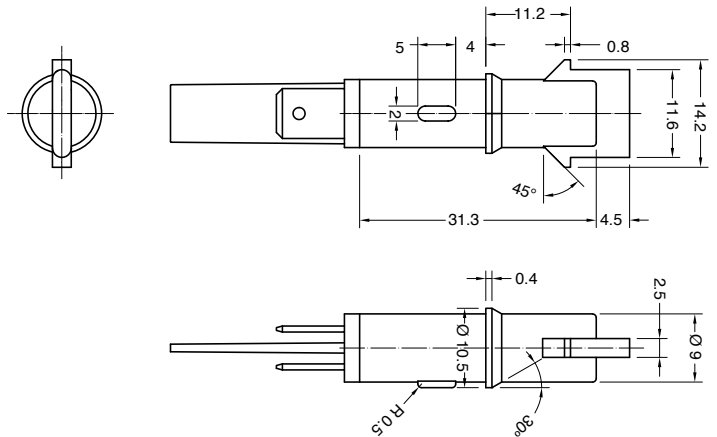


Lens available also separately SX2IT544...

8



2.5 x 11.6 mm







SERIES

CUT OUT

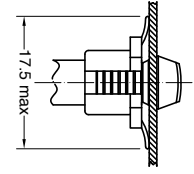
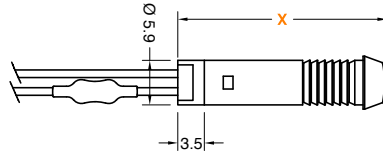


DRAWING

24

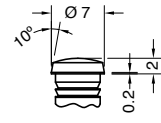
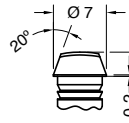


∅ 6 mm  
th 0.5 ... 2 mm



0 X = 24.2 mm

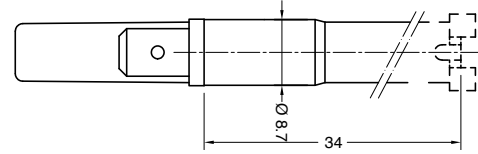
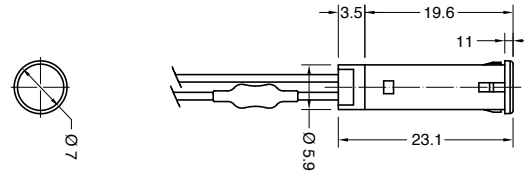
2 X = 23 mm



27



∅ 6 mm  
th 0.5 ... 3 mm

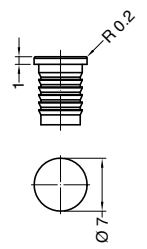
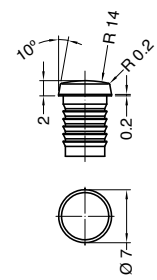
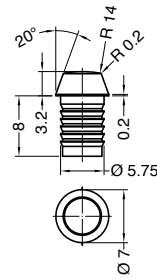
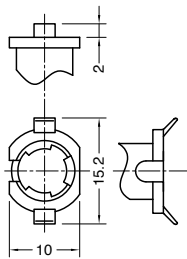


5 No lens 2 clips

0 Drawing 5 + lens

2 Drawing 5 + lens

8 Drawing 5 + lens



Lens available also separately SX27T0...

Lens available also separately SX27T2...

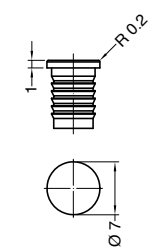
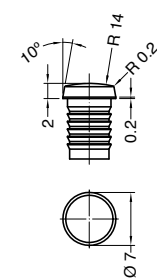
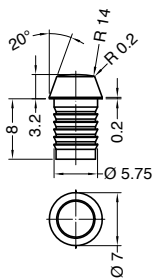
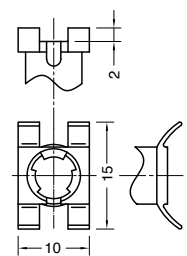
Lens available also separately SX27T8...

N No lens 4 clips

A Drawing N + lens

C Drawing N + lens

E Drawing N + lens



Lens available also separately SX27T0...

Lens available also separately SX27T2...

Lens available also separately SX27T8...

**TERMINAL**

**1** Series 27  
Tabs 6.3 x 0.8

**C** Series 27  
Signal Click

**K** Series 27  
Wires crimped

**P** Series 24  
Wires locked with plug

**R** Series 27  
Wires sealed

**FUNCTION**

**1** Series 24 - 27

Neon or Fluorescent lamp

**2** Series 27

Neon or Fluorescent lamp with anti-luminescence

**3** Series 27

Incandescent lamp

**5** Series 24 - 27

LED  
DC or AC current  
2 ÷ 24 V

**6** Series 24 - 27  
Terminal 1 - P

LED  
AC current  
110 ÷ 250 V

**7** Series 27  
Terminal C - K - R

LED  
AC current  
110 ÷ 250 V

**VOLTAGE**

**1** Function 5  
2 V

**2** Function 3 - 5  
12 V

**3** Function 3 - 5  
24 V

**4** Function 1 - 2 - 6 - 7  
110 V

**5** Function 1 - 2 - 6 - 7  
125 V

**6** Function 1 - 2 - 6 - 7  
230 V

**7** Function 1 - 2 - 6 - 7  
250 V

**8** Function 1 - 2  
400 V

UL certified

Available on demand

**X**

Custom

**TEMPERATURE**

**A**  
T 75 °C

**1** Function 1 - 2 - 3  
T 90 °C

**2** Function 1 - 2  
T 120 °C

**3** Function 1 - 2  
T 150 °C

**COLOUR**

**SERIES 24**

**ILLUMINATED** ☀

**G**  red

**H**  orange

**E**  green

**L**  white

**SERIES 27**

Drawing 5 - N

**NO LENS** ☀

**O**  red light

**E**  green light

Drawing 0 - 2 - 8 - A - C - E

**ILLUMINATED** ☀

**G**  red

**H**  orange

**E**  green

**L**  white

**X**  ?  
custom

**WIRES**

**000** Terminal 1 - C  
Indicator light without wires

Terminal K - P - R  
Indicator light with wires

**Wires Materials:**

- PVC (up to T90 °C)
- SILICONE (up to T200 °C)

**Wires Lengths:**  
from 60 mm to 600 mm (special version available up to 1.450 mm)

**Wires Ends:**

- pre-stripped (from 5.5 to 18 mm)
- stripped (from 5.5 to 18 mm)
- not stripped
- crimp terminals



SERIES


CUT OUT

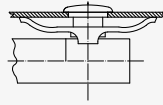


DRAWING

27

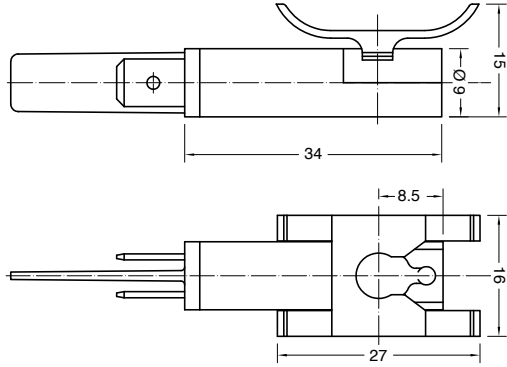


  
 ø 8 mm  
 th 0.5 ... 2 mm



**M** No lens

**P** Drawing M + lens



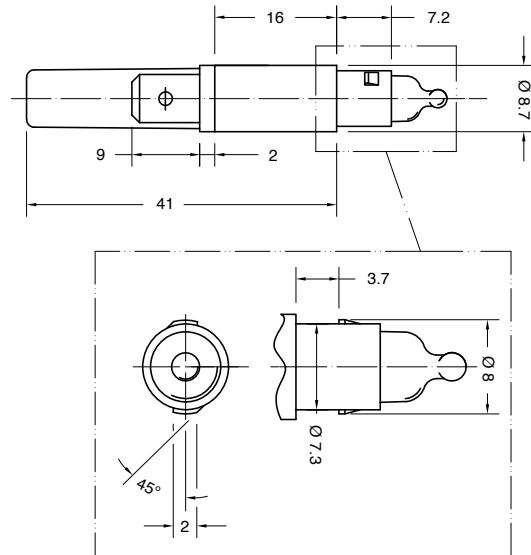
Lens available also separately SX27TP...

28



Custom


**5** No lens

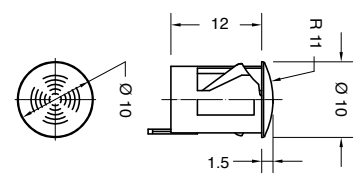
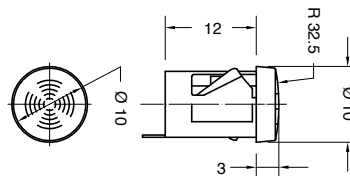


**6** Drawing 9 + lens

**F** Drawing 9 + lens



  
 ø 9 mm  
 th 0.8 ... 2 mm



Lens available also separately SX28T6...

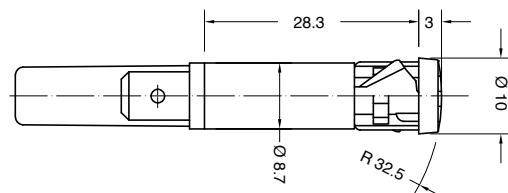
Lens available also separately SX28TF...

Further lens shapes available on demand

**H** One piece



  
 ø 9 mm  
 th 0.8 ... 2 mm



TERMINAL	FUNCTION	VOLTAGE	TEMPERATURE	COLOUR	WIRES
<p><b>1</b> Series 27 - 28 Tabs 6.3 x 0.8</p>	<p><b>1</b> Series 27 - 28</p> <p>Neon or Fluorescent lamp</p>	<p><b>1</b> Function 5 2 V</p> <p><b>2</b> Function 3 - 5 12 V</p> <p><b>3</b> Function 3 - 5 24 V</p> <p><b>4</b> Function 1 - 2 - 6 - 7 110 V</p> <p><b>5</b> Function 1 - 2 - 6 - 7 125 V</p> <p><b>6</b> Function 1 - 2 - 6 - 7 230 V</p> <p><b>7</b> Function 1 - 2 - 6 - 7 250 V</p> <p><b>8</b> Function 1 - 2 400 V</p> <p>UL certified</p> <p><input type="checkbox"/> Available on demand</p>	<p><b>A</b> T 75 °C</p> <p><b>1</b> Function 1 - 2 - 3 T 90 °C</p> <p><b>2</b> Function 1 - 2 T 120 °C</p> <p><b>3</b> Function 1 - 2 T 150 °C</p>	<p><b>NO LENS</b> ☀</p> <p><b>0</b>  red light</p> <p><b>1</b>  green light</p> <p><b>ILLUMINATED</b> ☀</p> <p><b>G</b>  red</p> <p><b>H</b>  orange</p> <p><b>E</b>  green</p> <p><b>L</b>  white</p> <p><b>X</b>  custom</p>	<p><b>000</b> Terminal 1 - C Indicator light without wires</p> <p><input type="text"/> <input type="text"/> <input type="text"/> Terminal K - R Indicator light with wires</p> <p><b>Wires Materials:</b></p> <ul style="list-style-type: none"> <li>■ PVC (up to T90 °C)</li> <li>■ SILICONE (up to T200 °C)</li> </ul> <p><b>Wires Lengths:</b> from 60 mm to 600 mm (special version available up to 1.450 mm)</p> <p><b>Wires Ends:</b></p> <ul style="list-style-type: none"> <li>■ pre-stripped (from 5.5 to 18 mm)</li> <li>■ stripped (from 5.5 to 18 mm)</li> <li>■ not stripped</li> <li>■ crimp terminals</li> </ul>
<p><b>C</b> Series 27 - 28 Signal Click</p>	<p><b>2</b> Series 27 - 28</p> <p>Neon or Fluorescent lamp with anti-luminescence</p>				
<p><b>K</b> Series 28 Wires crimped</p>	<p><b>3</b> Series 27 - 28</p> <p>Incandescent lamp</p>				
<p><b>R</b> Series 27 - 28 Wires sealed</p>	<p><b>5</b> Series 27 - 28</p> <p>LED DC or AC current 2 ÷ 24 V</p>				
	<p><b>6</b> Series 28 Terminal 1</p> <p>LED AC current 110 ÷ 250 V</p>				
	<p><b>7</b> Series 28 Terminal C - K - R</p> <p>LED AC current 110 ÷ 250 V</p>	<p><b>X</b> Custom</p>			



SERIES


CUT OUT



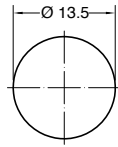
DRAWING

31

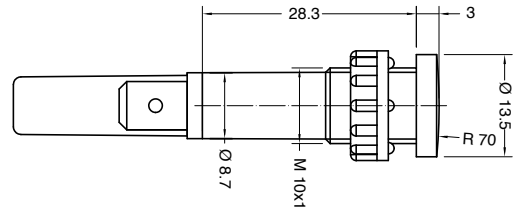



  
 $\varnothing 10 \text{ mm}$ 
  
 th 0.5 ... 9 mm

2 Mounted ring




B Unmounted ring

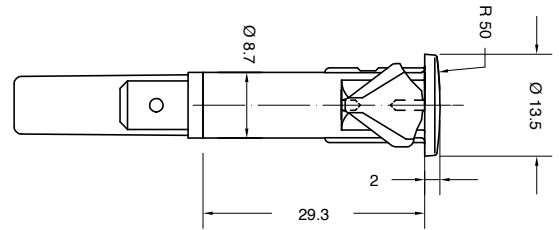
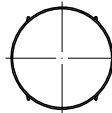


33

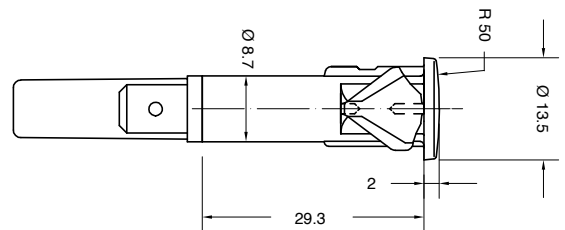
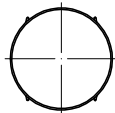



  
 $\varnothing 10 \text{ mm}$ 
  
 th 0.8 ... 2 mm

2




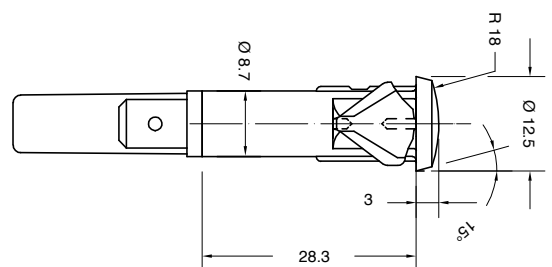
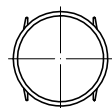
C With antirotation rib



H




  
 $\varnothing 10 \text{ mm}$ 
  
 th 0.8 ... 2 mm




  
 $\varnothing 10 \text{ mm}$ 
  
 th 0.8 ... 2 mm





SERIES

CUT OUT



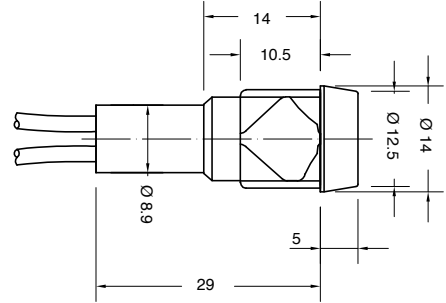
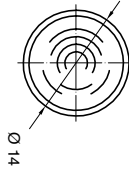
DRAWING

41



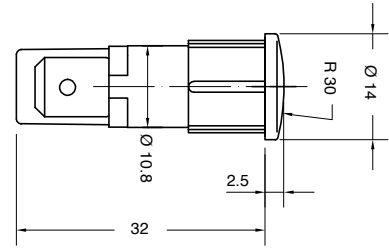
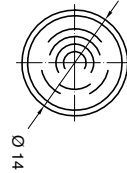
○  
ø 12 mm  
th 0.8 ... 2 mm

1



○  
ø 12 mm  
th 0.8 ... 2 mm

2

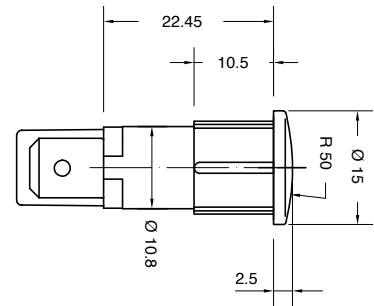
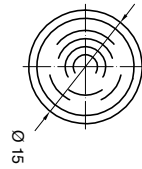


43



○  
ø 13 mm  
th 0.8 ... 2 mm

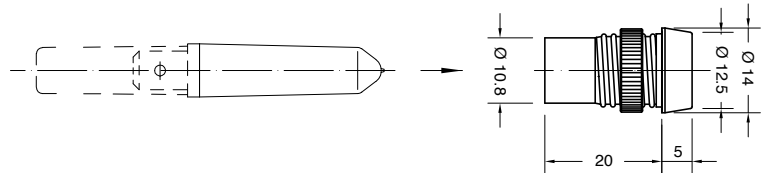
2



ACCESSORY LENSES FOR SERIES SX213...

SX21T511...

○  
ø 12 mm  
th 0.8 ... 6.5 mm



SX21T531...

○  
ø 13 mm  
th 0.8 ... 6.5 mm

