

B10



TYPICAL APPLICATIONS

Ironing systems

FUNCTIONS

- SPST, momentary or not
- SPDT, momentary or not
- SPCO

CYCLE No.

50.000

CUT OUT

27x12 mm

AMBIENT TEMPERATURE

120 °C

GWT

850 °C

GWT NO FLAME (<2sec)

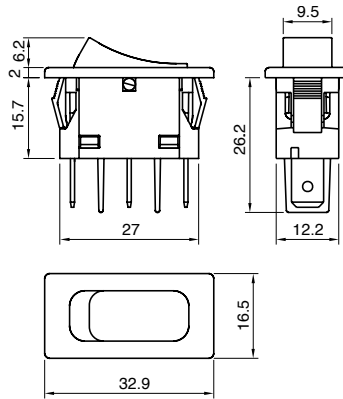
750 °C on demand



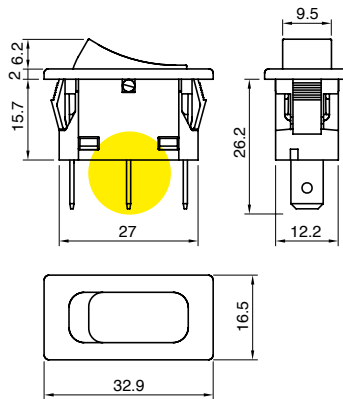
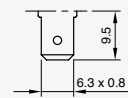
DRAWING



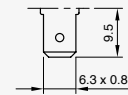
TERMINAL



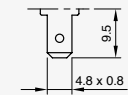
1



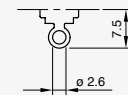
6

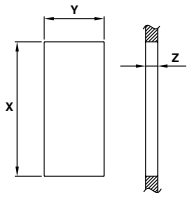


T



U





Z	Y		X	
0,75 ... 1,25	12,4	+0,2 0	27,4	+0,1 0
1,25 ... 2,0	12,4	+0,2 0	27,6	+0,1 0
2,0 ... 3,0	12,4	+0,2 0	27,8	+0,1 0

B
1
0

0
0
0

TERMINAL FUNCTION RATING BODY COLOUR ROCKER COLOUR MARKING COLOUR MARKING



FUNCTION

- 1
- 3 Terminal 1 - 6 - U
- 4 Terminal 1 - 6 - U
- 5 Terminal 1 - 6 - U
- A Terminal 1 - 6 - U
- B Terminal 1 - 6 - U



RATING

- C

Terminal 1 - 6 - U - 3

16 (6) A / 250 VAC
10 (4) A / 250 VAC - 5E4
T120/55 °C
EN 61058-1
- 20 A GP / 125 VAC
16 A GP / 250 VAC
1/3 HP - 125 VAC
3/4 HP - 250 VAC
T105/55 °C
UL 61058-1



BODY COLOUR

- 1
black
- 2
white
- X
custom



ROCKER COLOUR

- 1
black
- 2
white
- 9
red
- X
custom



MARKING COLOUR

- 0
none
- 1
black
- 2
white
- 5
grey
- 7
light blue
- 8
red
- 9
orange
- X
custom



MARKING

- 0
- 1
- 2
- 9
- A
- N
- X
?